

Stakeholder Engagement Strategy

What is stakeholder engagement?

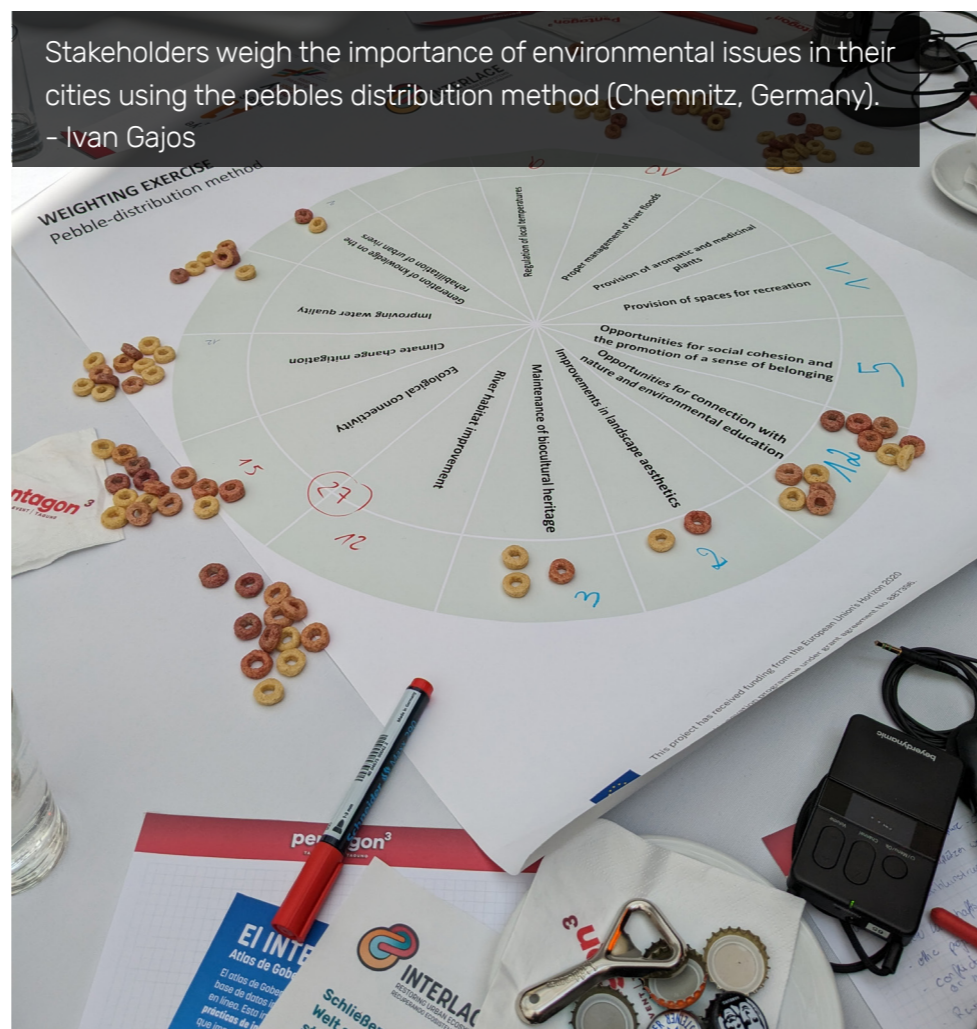
INTERLACE uses an inclusive, participatory approach to enable stakeholders to collaboratively address urban challenges and develop solutions. Stakeholders share knowledge, expertise and perspectives for the development of projects or activities tailored to the local context, and to learn from their experiences. INTERLACE sees this as a broad, inclusive and continuous process to achieve accepted outcomes.

Why is stakeholder engagement important in urban nature based solutions projects?

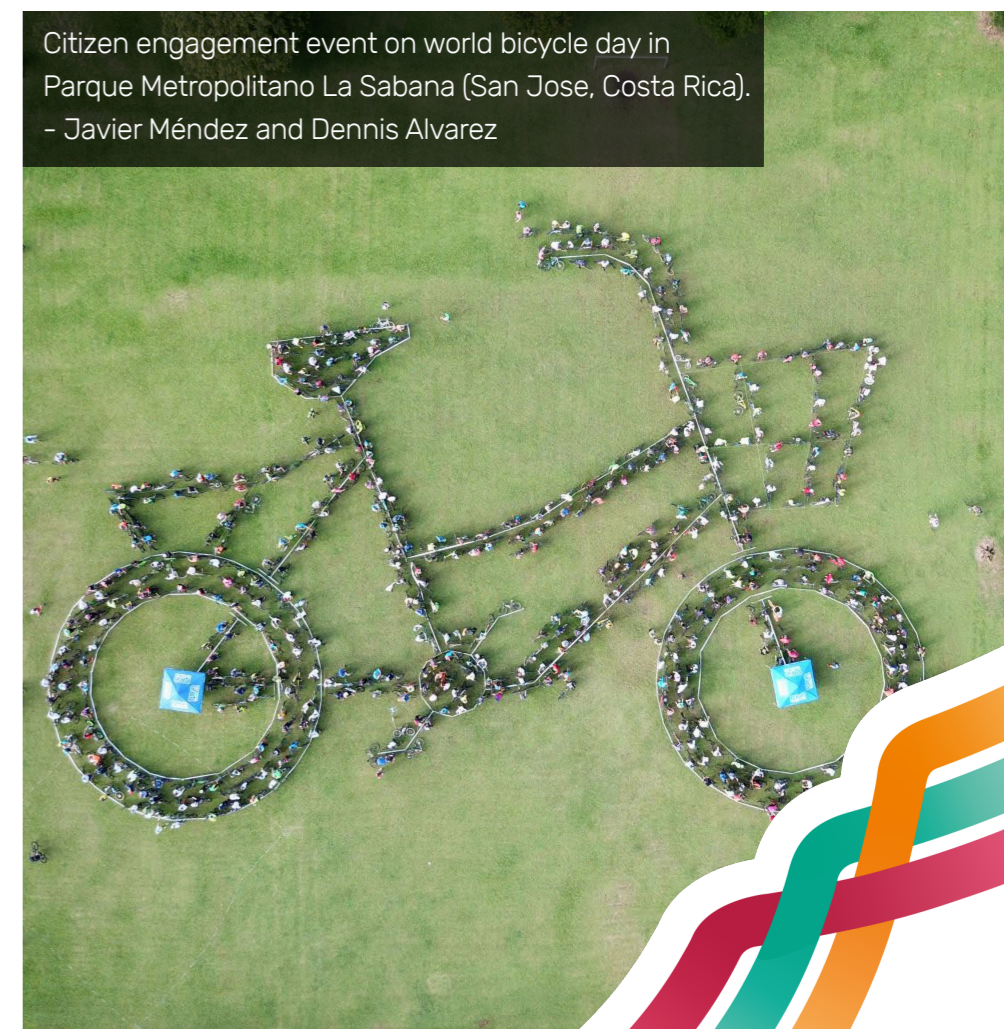
- Enables the inclusion of different knowledge, expertise and perspectives;
- Busts silo thinking: stimulates interaction and knowledge exchange between stakeholders;
- Tailors the project or activity to the local context and needs;
- Results in higher applicability, impact, credibility, equity, acceptance and innovative approaches.



Children designed their own nature-based solutions for their neighborhood using Minecraft (Envigado, Colombia). – Ivan Gajos



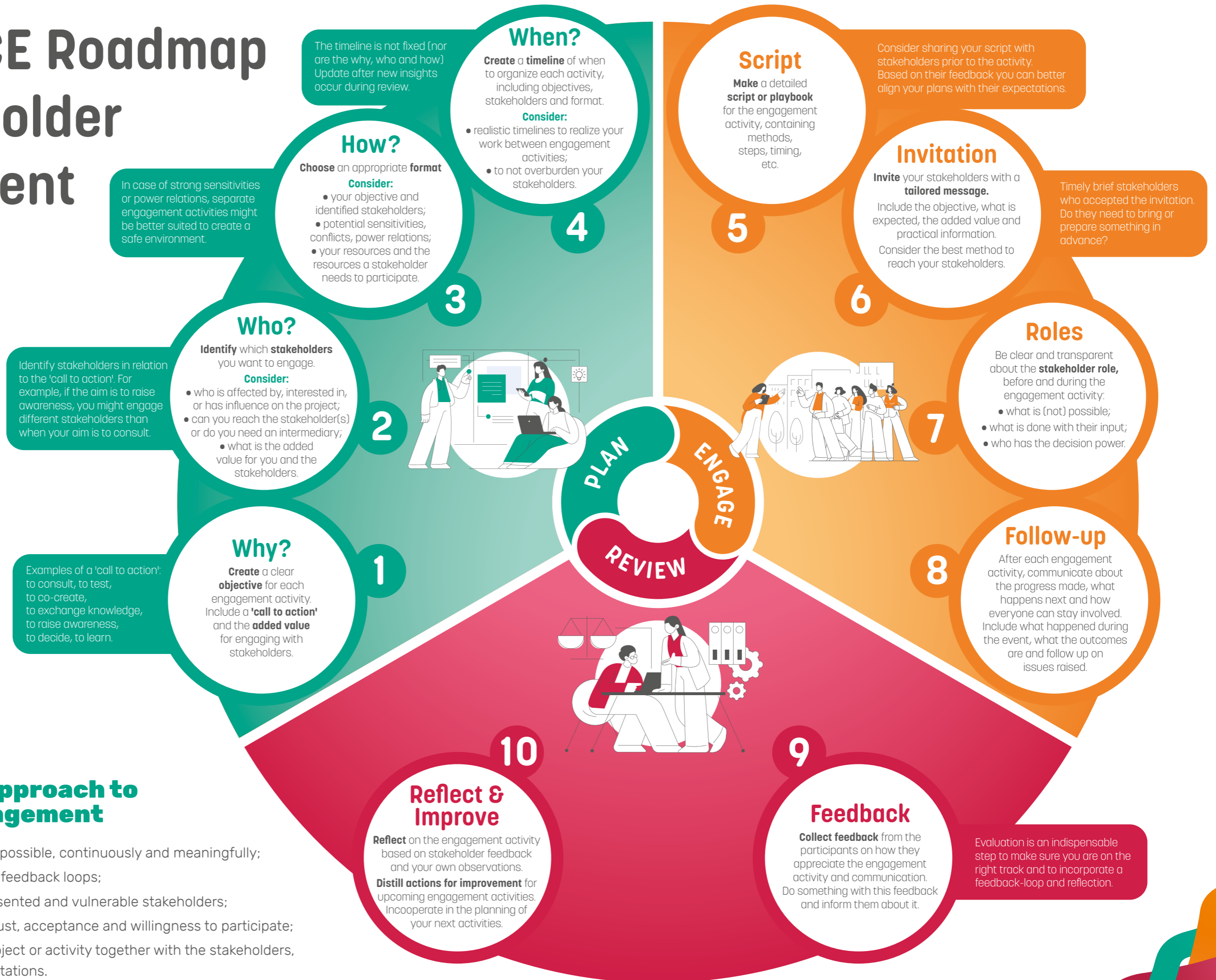
Stakeholders weigh the importance of environmental issues in their cities using the pebbles distribution method (Chemnitz, Germany). – Ivan Gajos



Citizen engagement event on world bicycle day in Parque Metropolitano La Sabana (San Jose, Costa Rica). – Javier Méndez and Dennis Alvarez



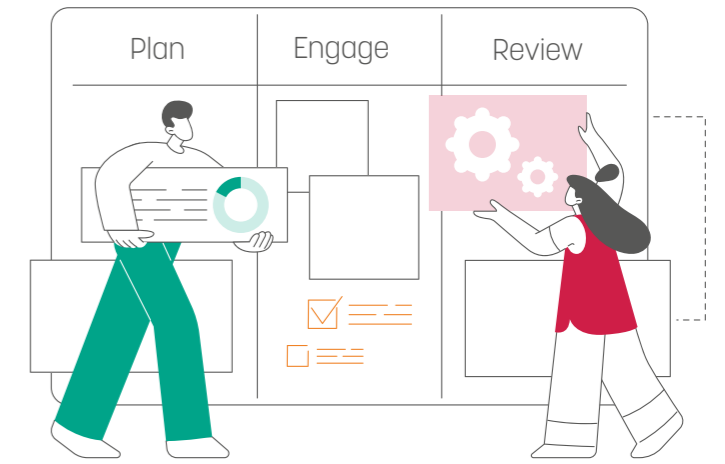
INTERLACE Roadmap to stakeholder engagement



The INTERLACE approach to stakeholder engagement

- Engage stakeholders as early as possible, continuously and meaningfully;
- Work in short cycles with regular feedback loops;
- Be inclusive: include underrepresented and vulnerable stakeholders;
- Build relationships to increase trust, acceptance and willingness to participate;
- Develop a clear vision of your project or activity together with the stakeholders, to include their needs and expectations.

INTERLACE resources relevant to stakeholder engagement



Consult the complete **Stakeholder Engagement Strategy** to read more about:

- Engagement roadmap;
- Minecraft gaming event as an example;
- Good practices;
- Troubleshooting;
- Stakeholder mapping (stakeholder roles & groups).

Download: <https://interlace-hub.com/product/30607>



The **Guidance on gender, cultural and ethics- related considerations** provides support for professionals implementing urban restoration activities, focusing on inclusive stakeholder participation. It offers clear guidance for implementation of inclusive engagement activities and monitoring, in the European and Latin American context.

Download: www.interlace-project.eu/node/193



The INTERLACE project uses an agile workflow, an iterative way of working in short cycles, allowing for early feedback to learn and improve faster and deliver more value. Consult the **Agile guidance** to read all about it.

Download: <https://www.interlace-project.eu/node/216>



For tips and learnings on virtual city-to-city exchange, consult the **Cookbook on virtual interactive exchange formats for cities**.

Download: www.interlace-project.eu/node/205

